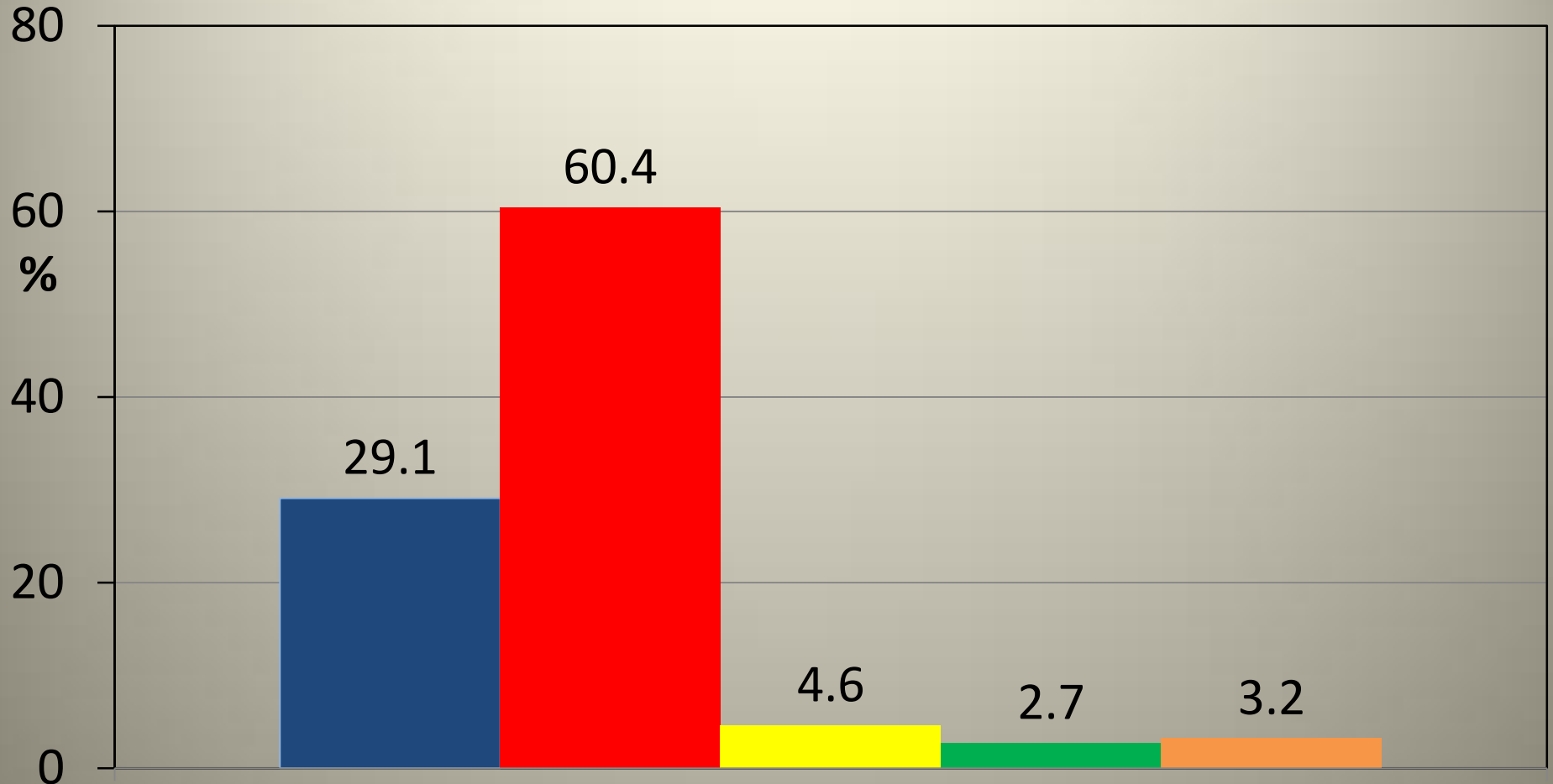


Survey Methodology

- Conducted online from Sept. 9-20, 2013
- 732 members completed and submitted their survey
- Response rate of 23% of all active e-mail addresses supplied
- Margin of Error of +/-3.4% to a 95% Confidence Level

Professional Staffing Levels

(732 Respondents)



"Do you consider your profession to be fully-staffed in your workplace for full-time, part-time and casual positions?"

■ Yes

■ No

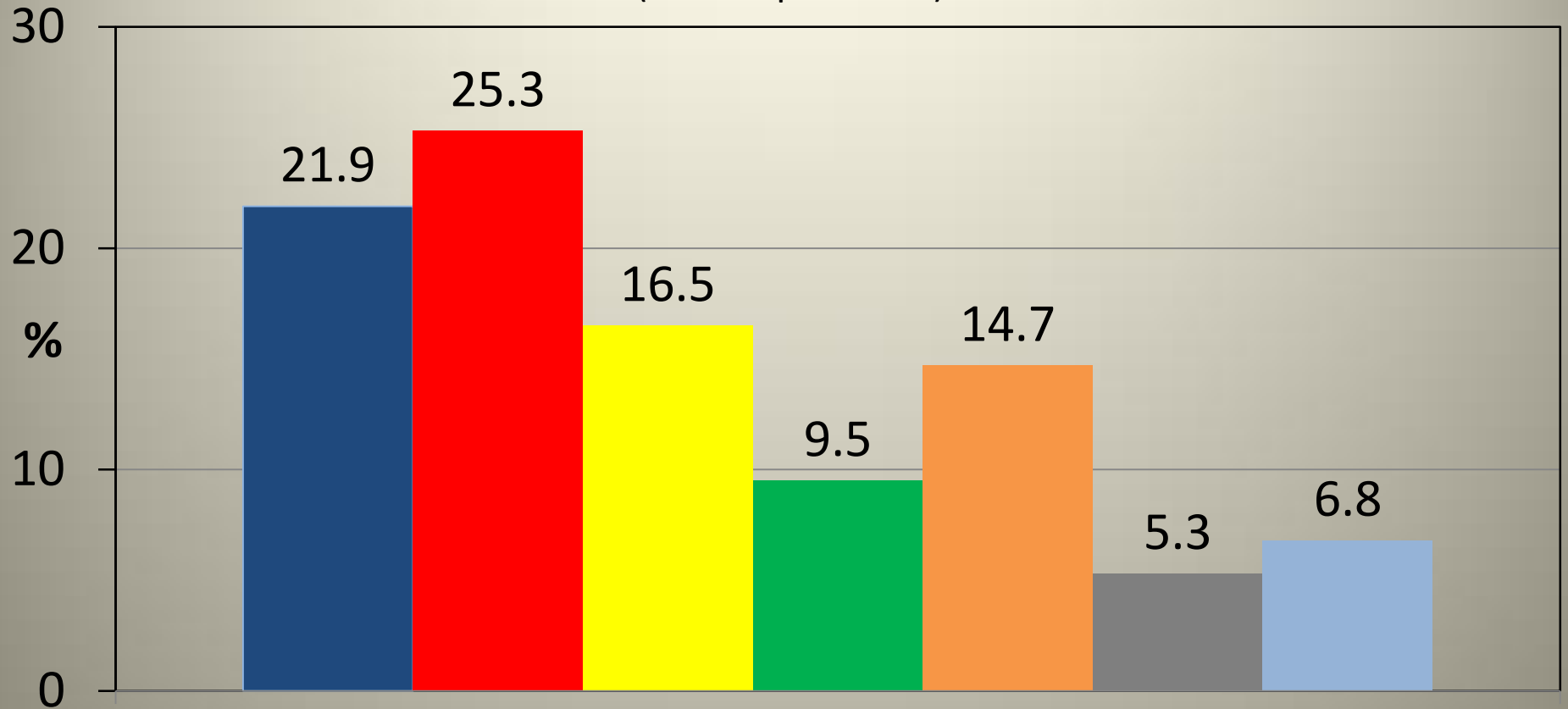
■ Unsure

■ Other

■ Don't Know/Refused

Additional Full-Time Positions Required

(442 Respondents)



"(If responded 'no') In your professional opinion, how many more full-time positions are required for your profession in your workplace to provide an appropriate level of service to the public?"

■ One ■ Two ■ Three ■ Four ■ Five or More ■ Other ■ Don't Know/Refused